

# pink or blue®

## The Early Gender Test

How would you like to receive the results: *(check all those that apply)*

- Email/Internet (Fastest)       US Mail  
 Fax       Telephone

Name: \_\_\_\_\_

Street: \_\_\_\_\_

City: \_\_\_\_\_ State: \_\_\_\_\_ Zip: \_\_\_\_\_

Phone: (    ) \_\_\_\_\_ - \_\_\_\_\_ Fax: (    ) \_\_\_\_\_ - \_\_\_\_\_

Email: \_\_\_\_\_

Type of Payment:

- VISA       Master Card       American Express  
 Discover       Money Order       Personal Check

Amount to be Charged:      \$249.00  
 Credit Card: \_\_\_\_\_ Exp: \_\_\_\_\_

Standard Pink or Blue™ Gender Test      \$279.00

*Results in 5 Days from the day specimens are received in the lab.*

\$30 OFF: Pregnancy Test Discount      (\$30.00)

**TOTAL      \$249.00**

### Consent to DNA Testing:

*All materials and products provided by Consumer Genetics, Inc. are provided for informational purposes only. Consult with a physician or health care provider regarding any questions pertaining to fertility, pregnancy, breastfeeding, baby care, etc. This service should not replace a woman's visit to a doctor during pregnancy for ultrasounds and other pregnancy related tests. Consumer Genetics, Inc. shall not be held liable for any damages caused as a result of the use of the information or products contained herein. By making a purchase from Consumer Genetics, Inc., you agree to release, indemnify, and hold harmless all of its officers and employees from all liability for your use of product(s) purchased. Consumer Genetics, Inc. is not liable for any action that might be taken by users of this service.*

Mother's Signature: \_\_\_\_\_ Date: \_\_\_\_\_

Mother's Name: \_\_\_\_\_ *(please print)*



### PREPARATIONS BEFORE OPENING THE KIT:

- If you have not confirmed your pregnancy, please do so with the pregnancy test included. Please follow instructions with the test package.
- Wash your hands thoroughly with soap and dry on a paper towel. Do not use house cloth towels. House cloth towels might have male DNA contamination.
- Males should NOT be assisting or present during this finger prick blood collection process. All male individuals should be asked to leave the room before opening this kit, and should remain out of the room until Step 8 has been completed.
- Break the seal and carefully pull the kit tray from the kit box and place on a clean dry surface.



### PRECAUTIONS AND LIMITATIONS:

- Failure to follow all instructions may affect the accuracy of the test results.
- Once you have collected your blood sample do not store the sample at or above 50 degrees C or 122 degrees F for more than 12 hours.
- Not intended for use by hemophiliacs or those persons taking medications that thin the blood (anticoagulants).
- Use the provided lancets on only one individual per test kit.  
***Never use a lancet that has been used by another person.***
- Keep out of reach of children. Lancets can be discarded as regular trash.

### 1. Preparation

All male individuals should be asked to leave the room until Step 8 has been finished. Males should NOT be assisting or present during this finger prick blood collection process.

Lay out the spring loaded lancets, alcohol swab and bandage. Remove the Blood Collection DNA Card from its pouch and place it on a clean surface, with the three (3) circles facing up. It is suggested to lay everything out on a paper towel to reduce the possibility of introducing male DNA contamination.



### Questions:

Call toll-free  
 1-866-6-WHAT-R-U  
 (1-866-694-2878)

### Health Support Specialists available:

Weekdays 8:00 am–5:00 pm PST  
 Weekends 10:00 am – 4:00 pm PST  
 Or visit our website 24/7 for answers to common questions.

### Consumer Genetics, Inc.,

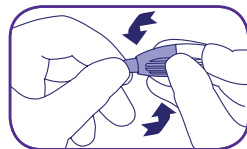
562 E. Weddell Dr., Ste. 9,  
 Sunnyvale, CA 94089  
 www.consumergenetics.com  
 www.tellmepinkorblue.com  
 Toll Free: (866)-6-WHAT-R-U  
 Phone: (408) 734-2229  
 Fax: (408) 734-2221

**2. Remove Protection Cap From Lancet**

To use the lancets, twist or unscrew the plastic protection cap from the tip of the lancet in either direction for one (1) complete turn.

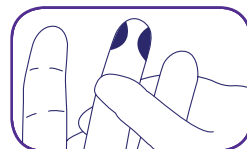
**NOTE:** Do not push the tip of the lancet after the protection cap has been taken off; this will disengage the spring loaded lancet. Once the protection cap is removed, discard the protection cap. Do not touch the exposed surface of the lancet until you are ready to use it. Also, do not press the tip of the lancet against anything; this will disengage the spring loaded lancet.

The spring loaded lancets will produce about 4-5 drops of blood from each finger prick. With most people, using one (1) lancet is sufficient to collect enough blood to fill the three (3) circles on the DNA Card. A second lancet is provided for your convenience. Additional lancets may be purchased from the pharmacy if needed.



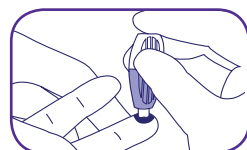
**3. Choose Which Finger To Draw Blood From**

Choose either the "middle", "ring" or "pinky" finger of your non-dominant hand (usually the left hand). The hand should be clean and warm. Rub hands together for 10 seconds and then allow arm with selected finger to rest at your side for 30 seconds. Standing may also help your blood flow more easily.



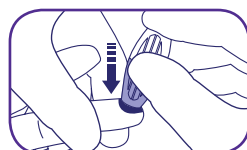
**4. Clean The Finger With Alcohol Swab**

Tear open the alcohol swab and take out the wipe. Select an area on your finger, preferable the side of the finger where the skin is less tough. Clean the selected area by rubbing it with the alcohol wipe. Let the alcohol on the finger dry completely before proceeding.



**5. Press Lancet Tip Firmly On Finger**

Press the tip of the lancet against the finger until it clicks. You may feel a slight sting when the lancet is launched. Observe the finger to see if blood is flowing from the prick. The prick might not be apparent at first. It may be necessary to massage the finger from the base up to the prick site to produce the first drop of blood.

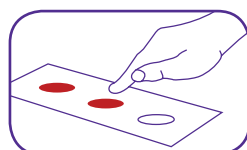


**6. Gently Massage Arm, Hand & Finger To Produce Blood Drop**

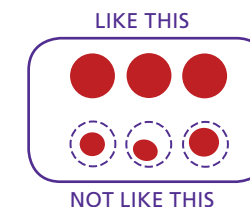
Hold finger down over the circle on Blood Collection DNA Card, but try not to touch the circle with the finger. Gently massage the arm starting at the elbow and working down to the wrist and down to the base of the finger to produce blood. Do not squeeze just the finger, this may block the blood flow.

**7. Drop Blood Onto The DNA Card**

When a large and full-hanging drop of blood is formed, allow the blood to drop into one (1) of the three (3) circles on the DNA Card. Carefully touch the inside of the circle with the blood drop only, try not to touch the DNA Card with the finger. Continue to apply blood drops onto open areas of the three (3) circles until they are completely covered with blood. If the blood stops flowing before the three (3)



circles on the DNA Card are filled in with blood, go to step 2, and use another lancet with another finger. After completely filling the three (3) circles on the DNA Card, clean finger with the alcohol wipe and apply the adhesive bandage to the finger.



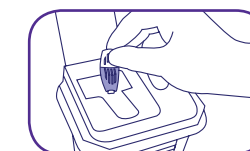
**8. Dry The Blood On The DNA Card**

Males should still stay out of the room until this step is completed. Allow the blood on the DNA Card to air dry in a clean, dry area for at least 30 minutes. Do not allow the DNA Card to be exposed to direct sunlight or extreme temperature or humidity. Once the blood on the DNA Card is dried, without touching the filter paper in the DNA Card, insert the card back into the Blood Collection DNA Card Pouch. Remove the protective paper to expose the adhesive strip and seal the Blood Collection DNA Card Pouch shut. The blood sample is stable for several months if stored at room temperature.

**Do not reuse the lancets. They are designed to be used only once.**

**9. Clean-up**

Once you have reached this step, and the Blood Collection DNA Card Pouch is shut and sealed, **males can be invited back into the area** and may assist with the remainder of the process. Lancets and all other used materials can be disposed of as daily household trash.



**10. Complete The Order Form**

Completely fill out the Order Form with your contact and payment information. The Order Form will also allow you to select how you would like to receive your test results. Do not forget to sign and date the Consent Form section of the Order Form.

**11. Mail Your Blood Sample And Order Form**

Place the completed Order Form and sealed Blood Collection DNA Card Pouch into the preaddressed, prepaid envelope. Drop off at any US Post Office or Mail Box. Alternatively, you may choose to ship via UPS, FedEx, or Airborne to:

**Consumer Genetics, Inc.**  
Specimen Collection Facility  
562 E. Weddell Dr., Ste. 9  
Sunnyvale, CA 94089



**12. The Test Results**

Consumer Genetics will process the DNA test on the blood specimens once the samples and payment have been received. The test results will be delivered to you in the way that has been specified on Order Form.

**The quickest way to receive your results is by Email/Internet.**